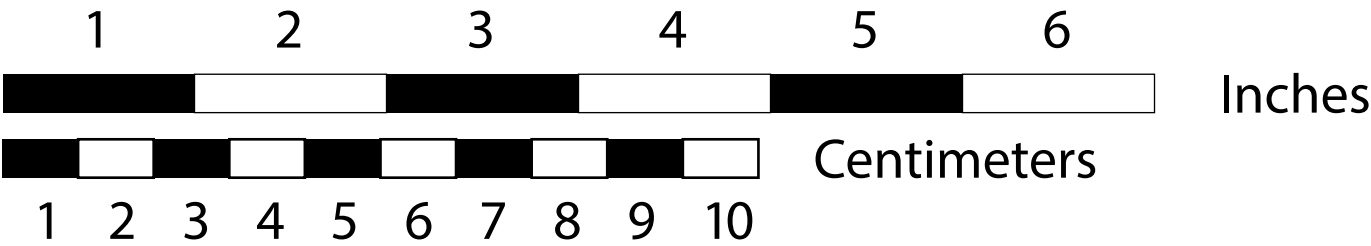
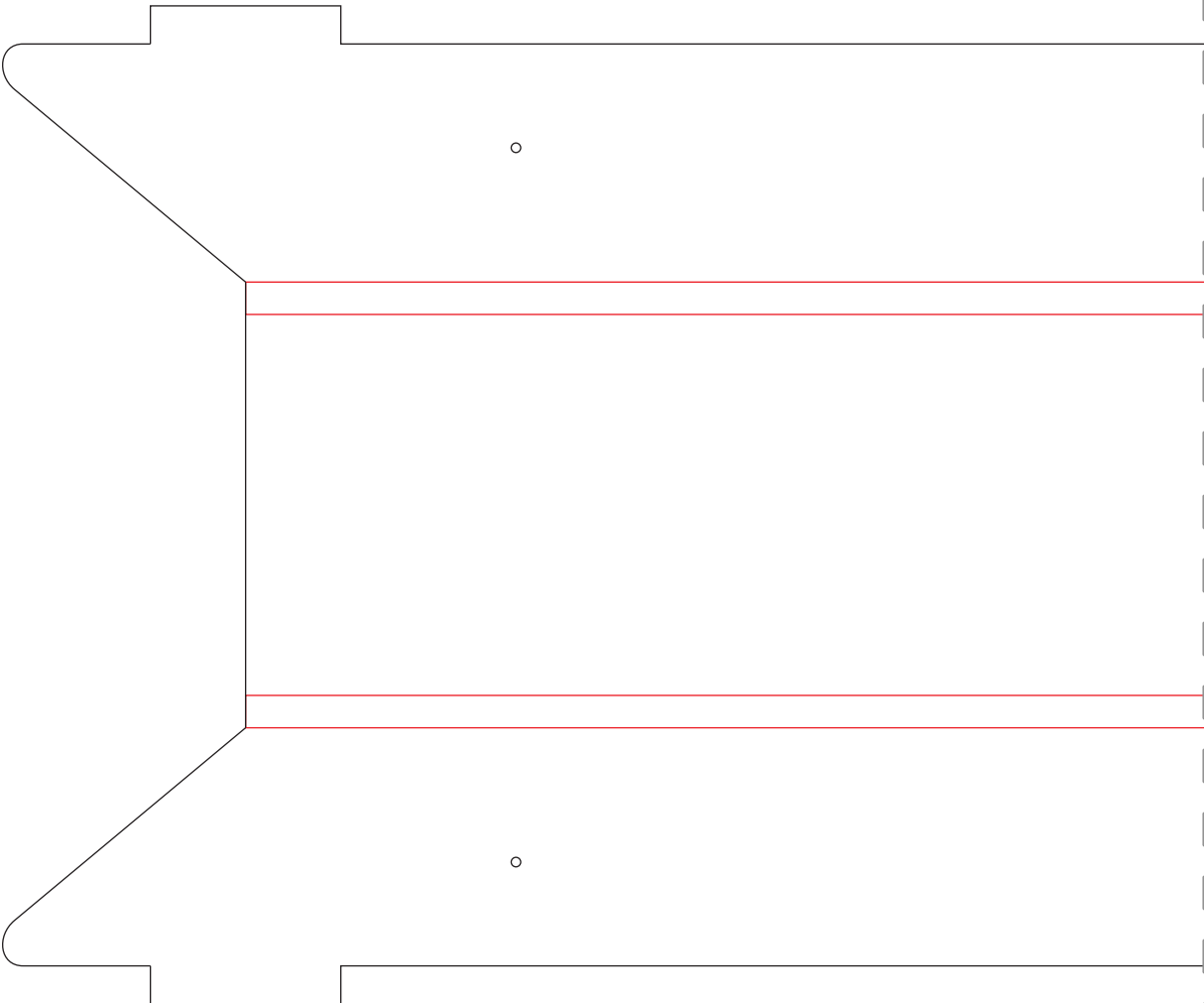
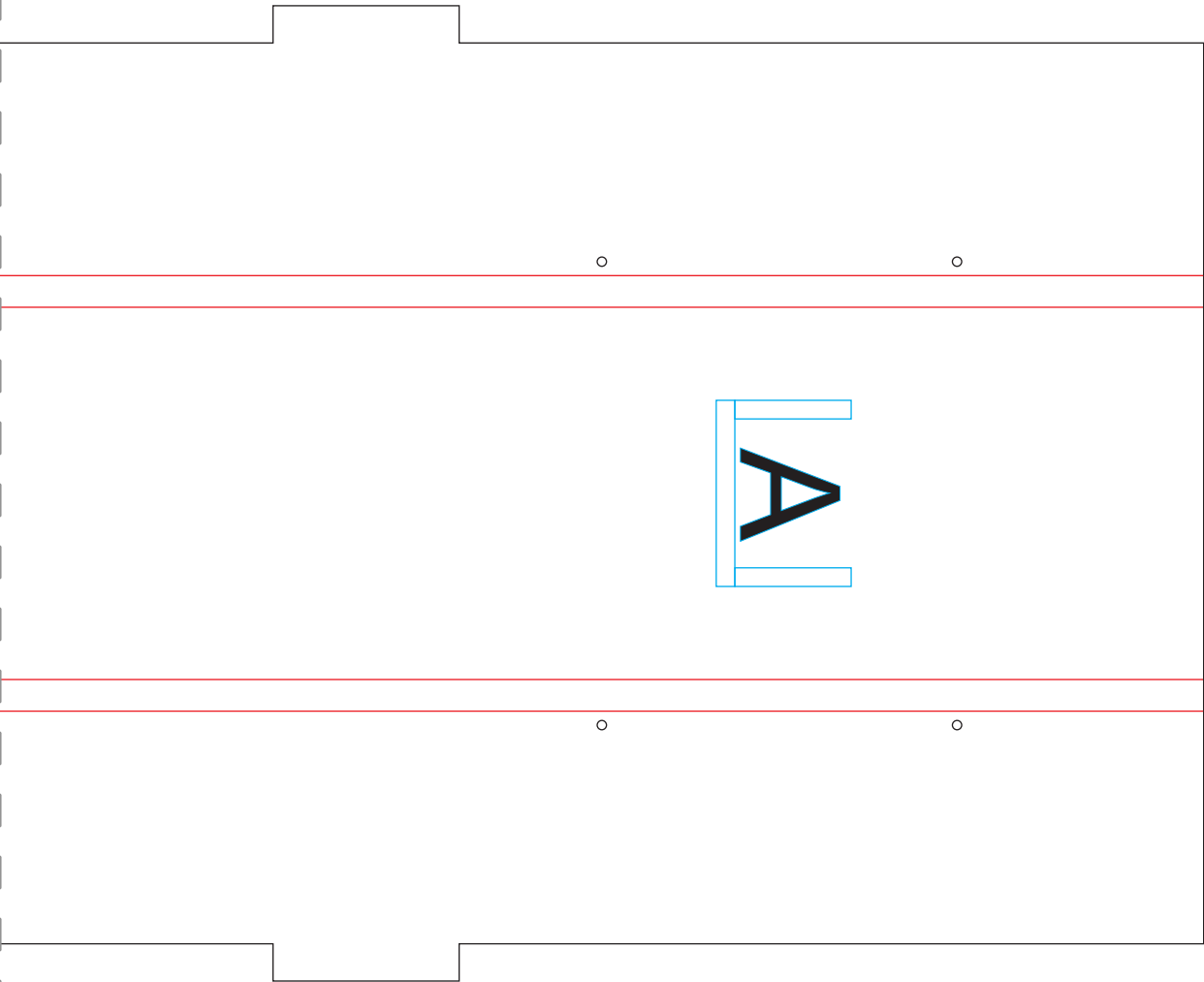
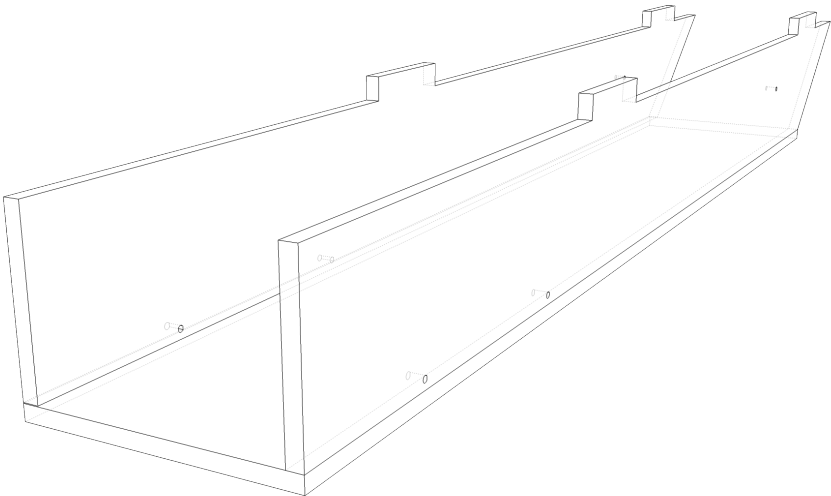


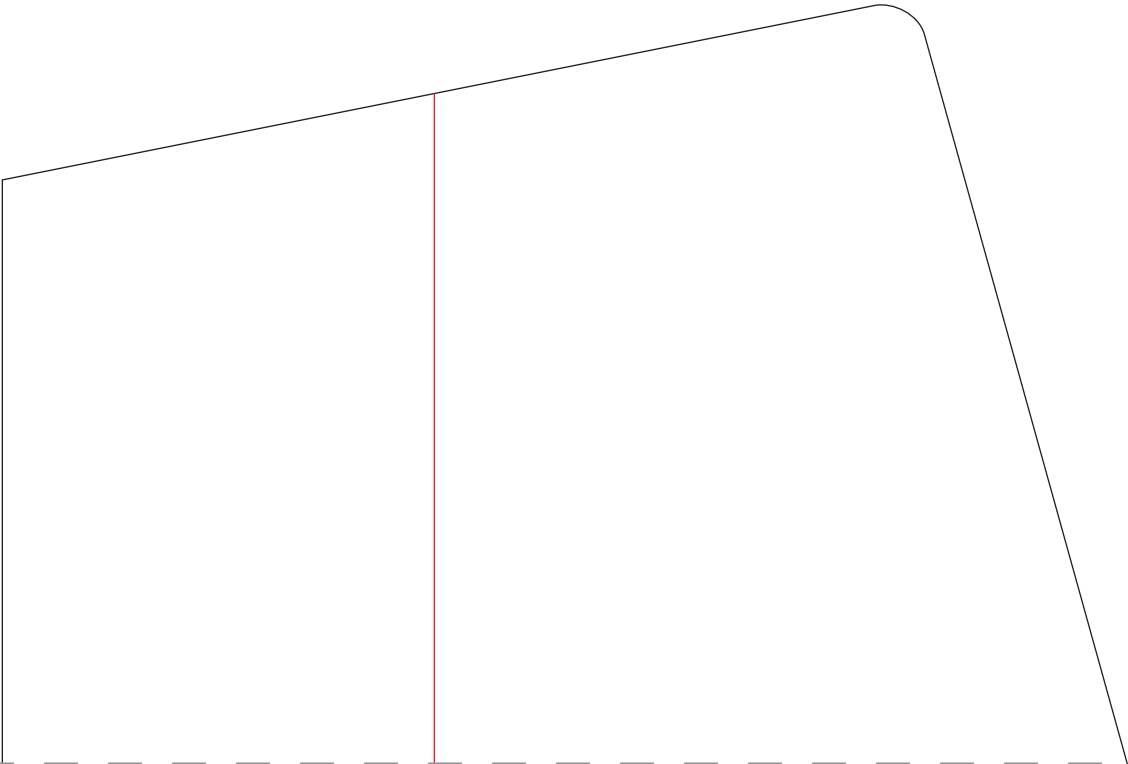
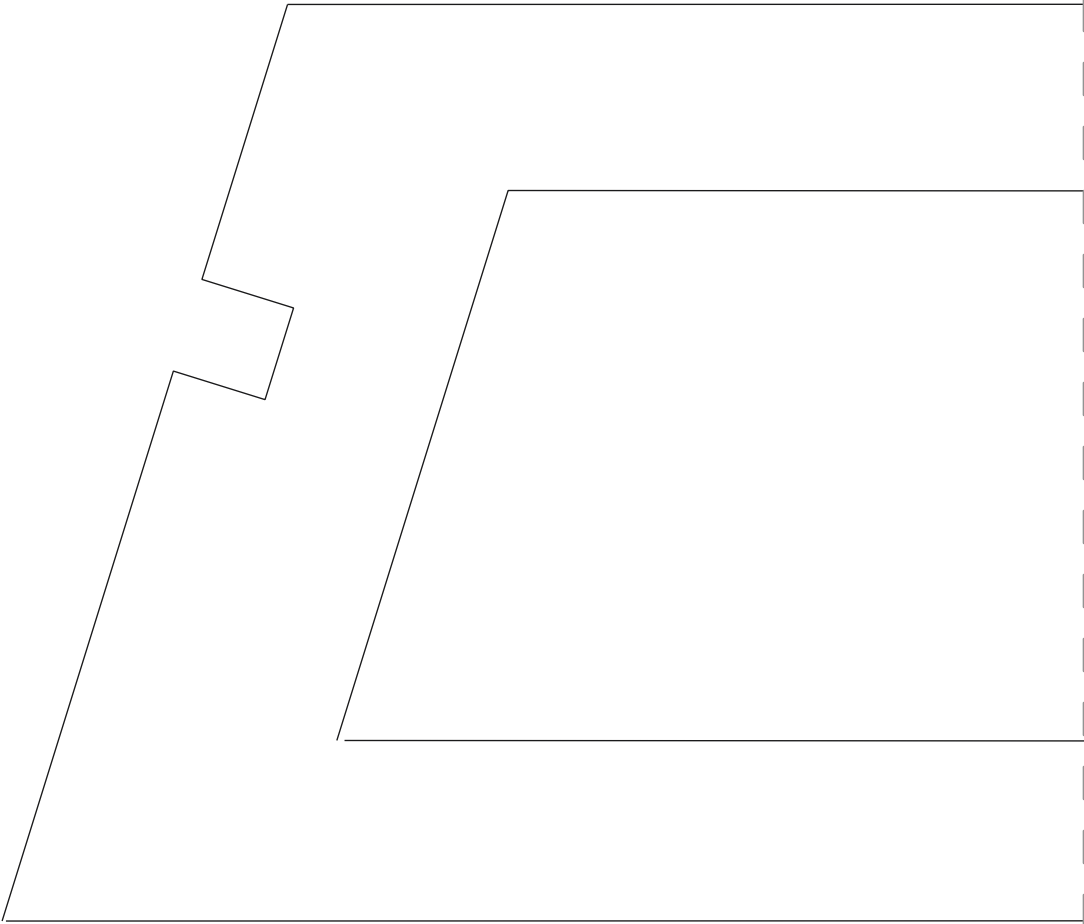
# FT Baby Blender

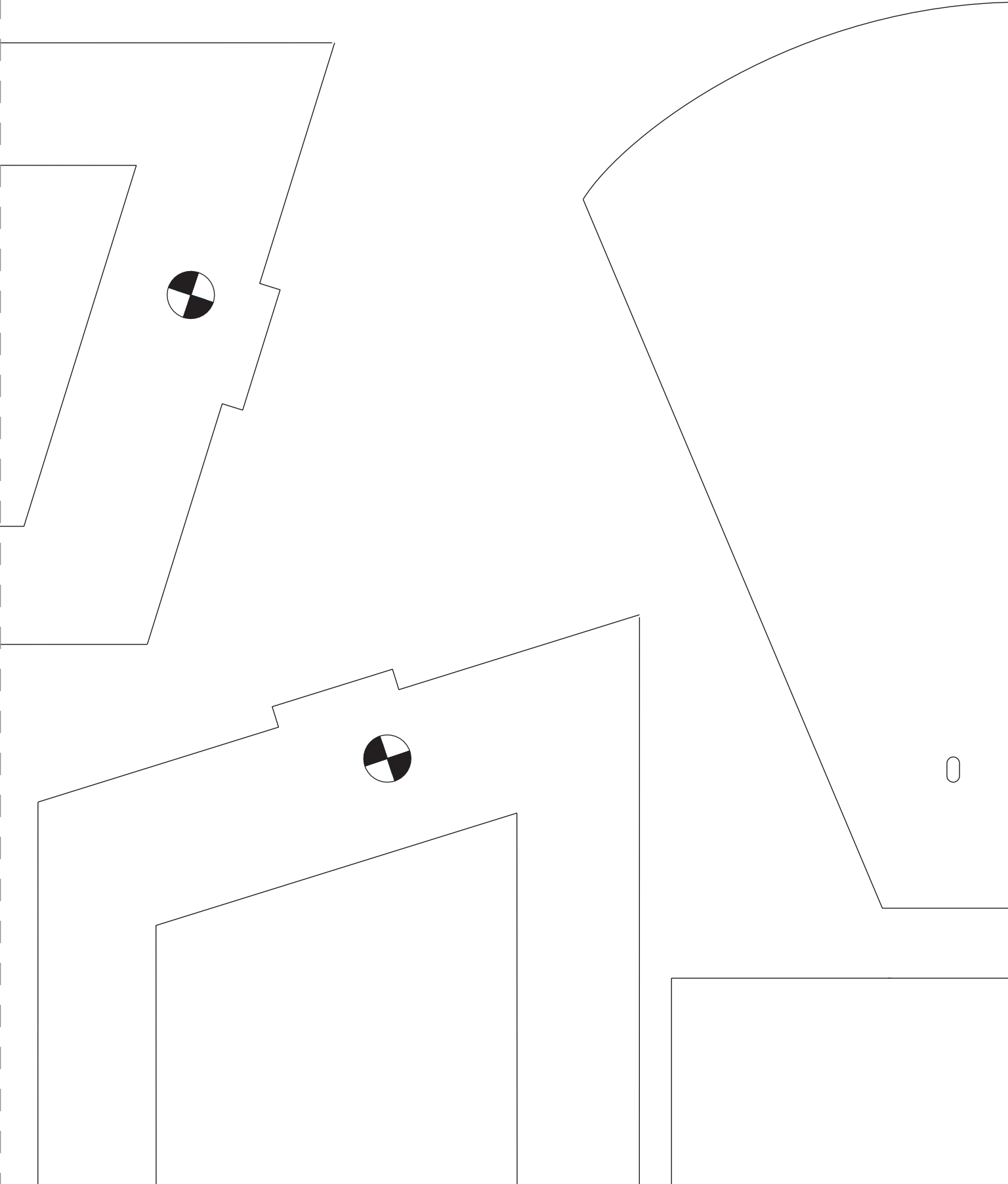


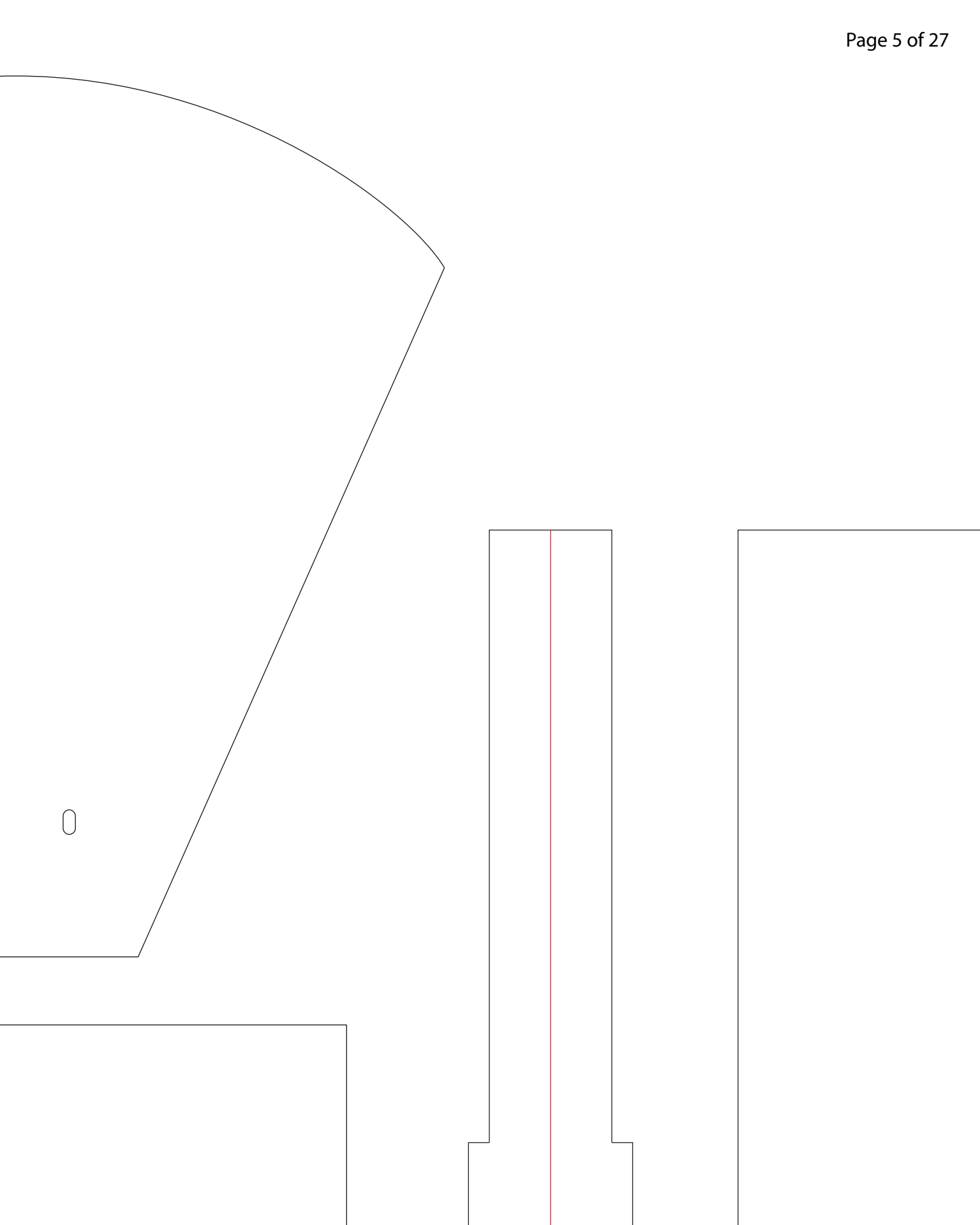
Design By: Josh Bixler



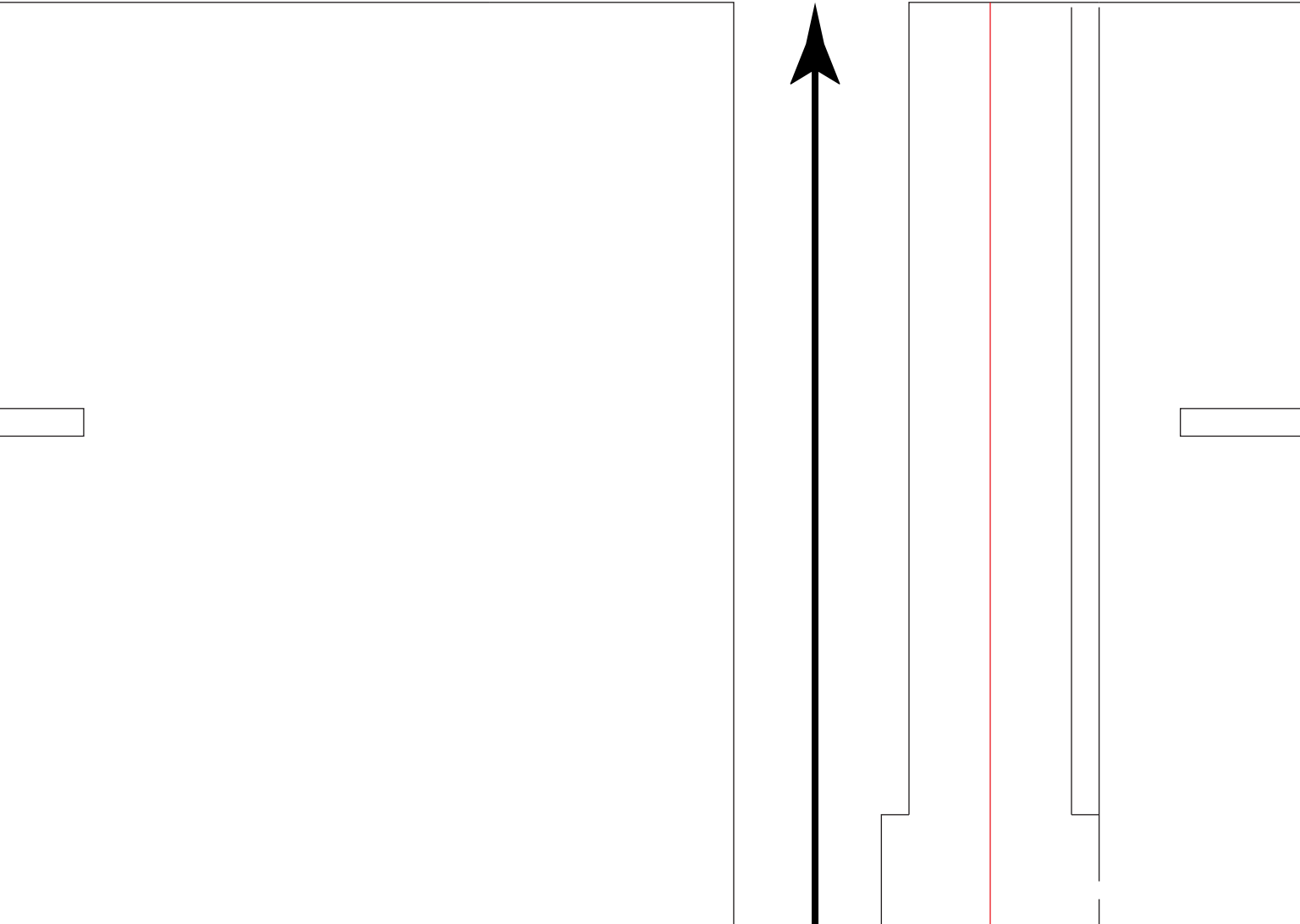








--	--	--	--	--	--



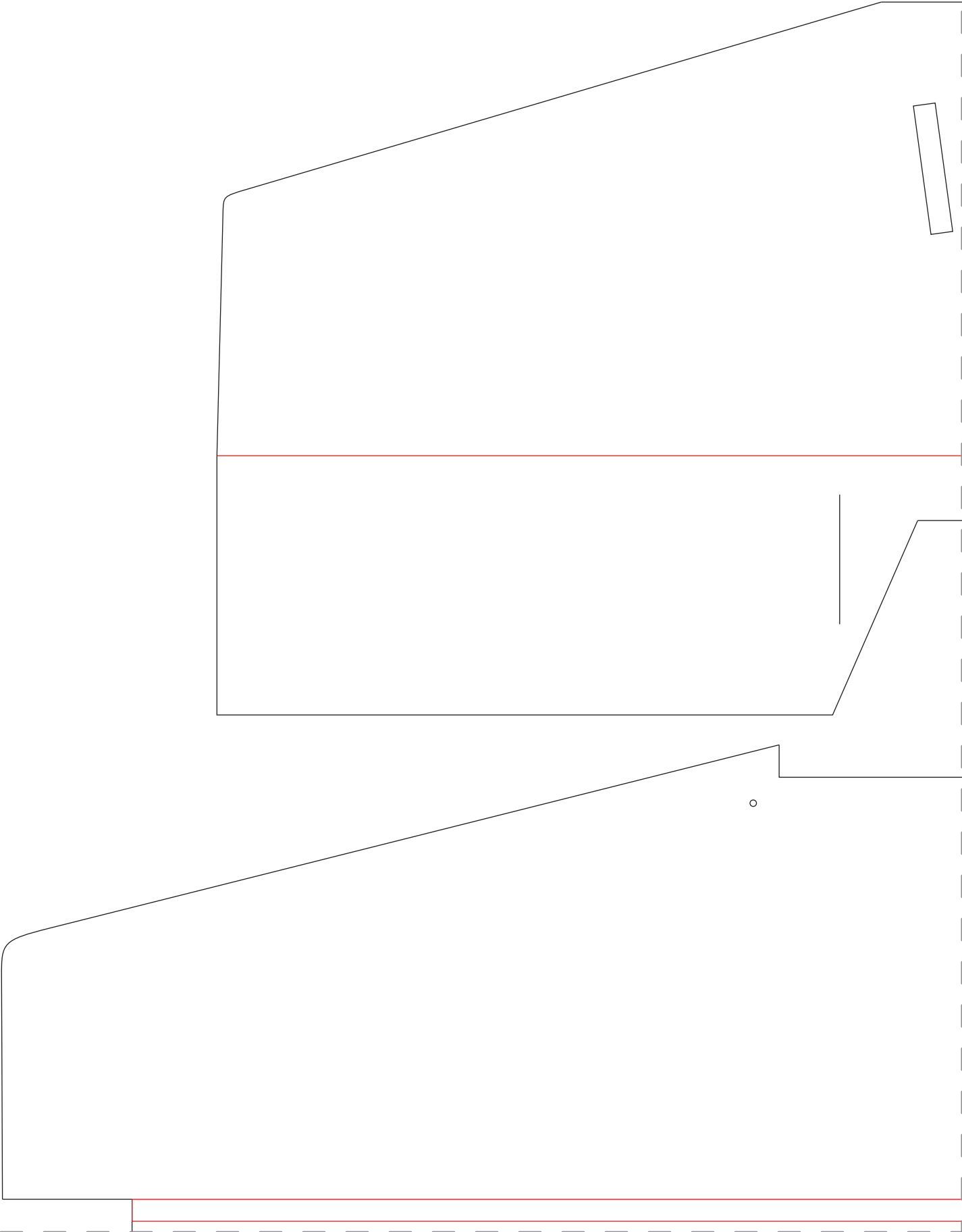
A diagram consisting of a horizontal line and a vertical line intersecting at a point. The horizontal line is positioned in the upper half of the image, and the vertical line is positioned in the right half. At the right end of the horizontal line, there is a small rectangular box. At the bottom end of the vertical line, there is a small rectangular box. The intersection of the two lines is located within the area defined by these two boxes.

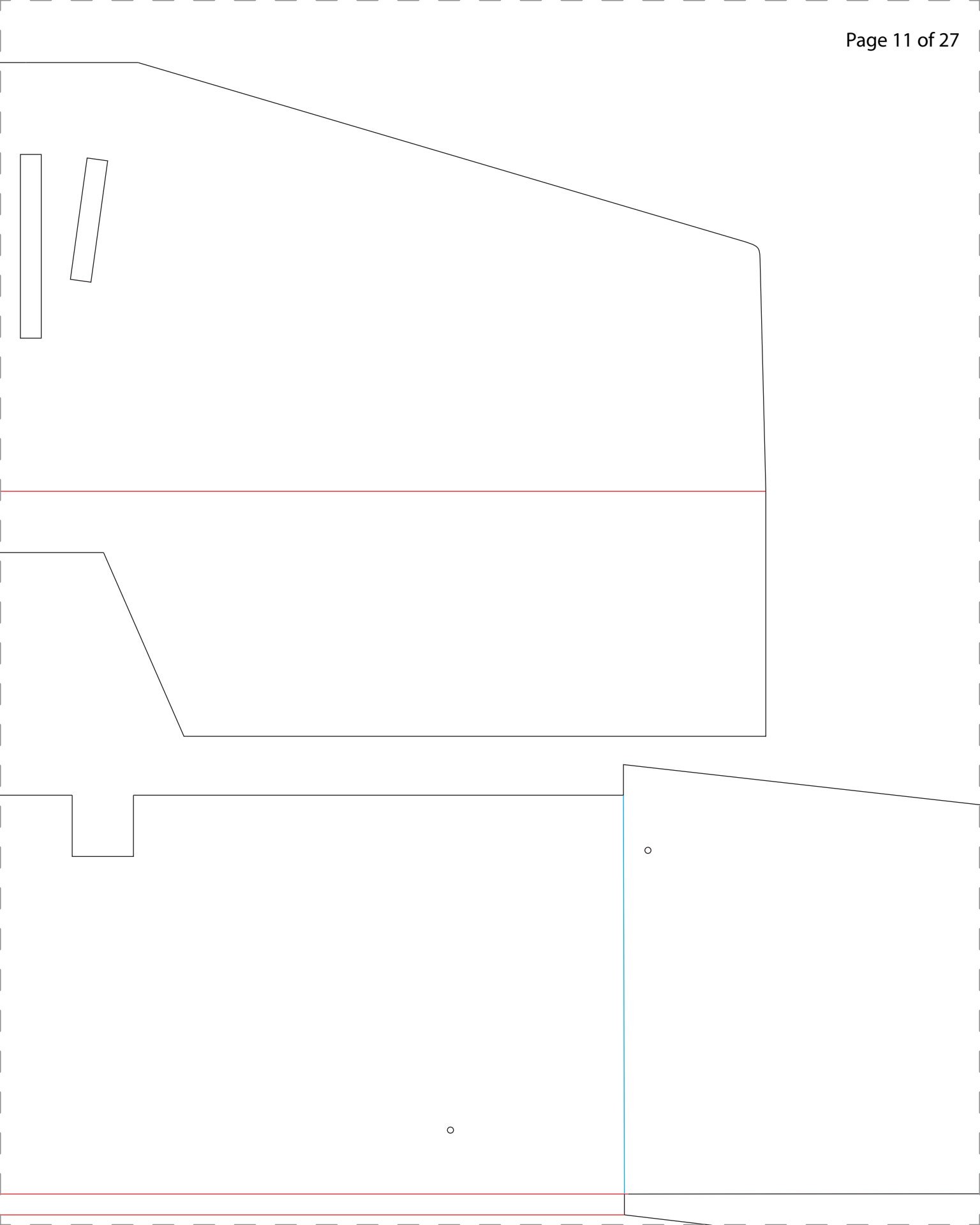


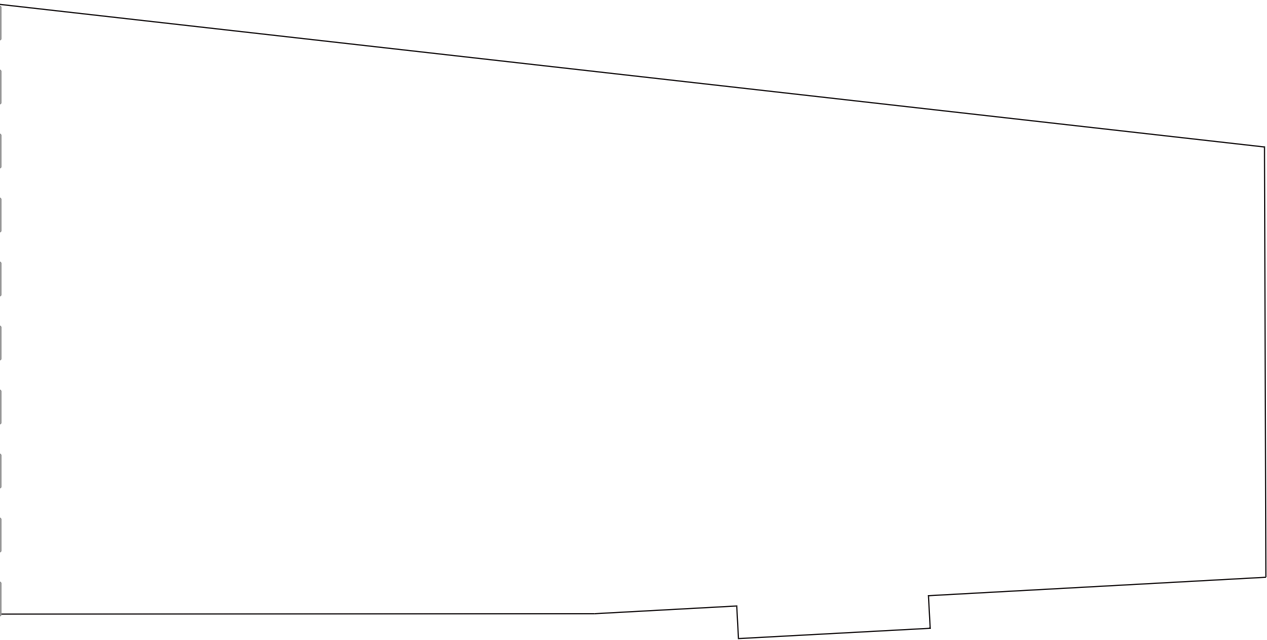
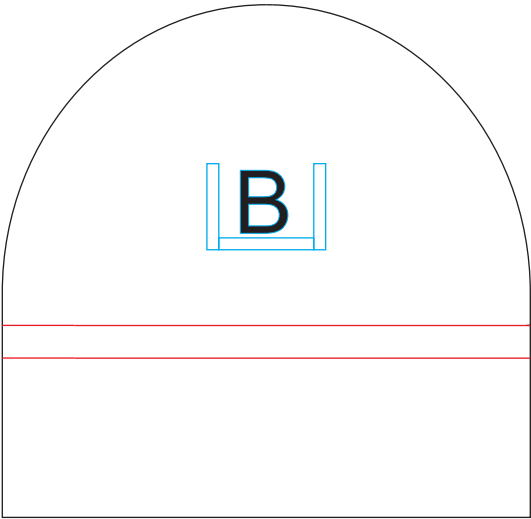
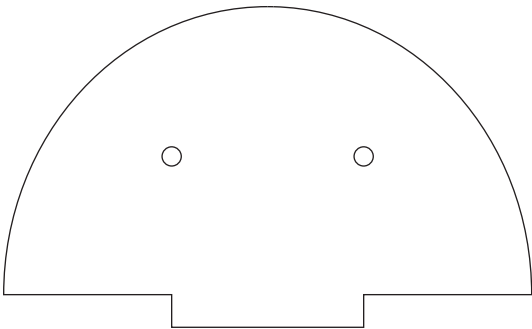
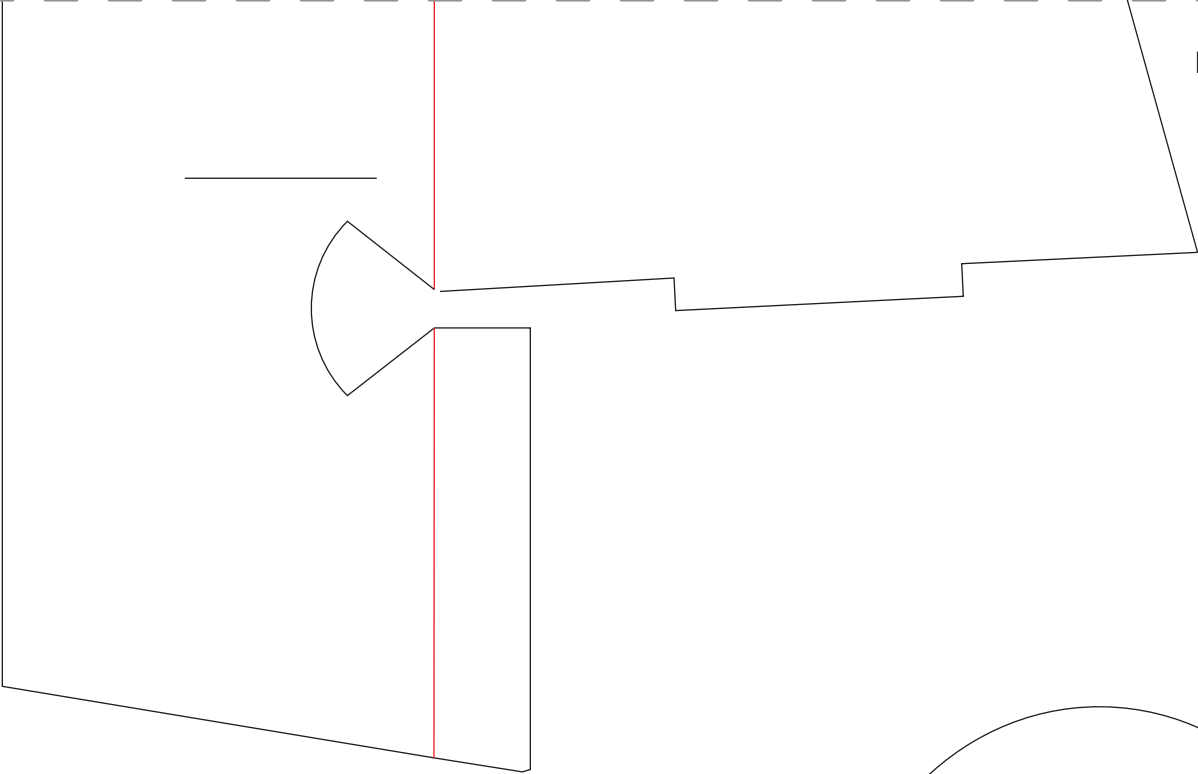


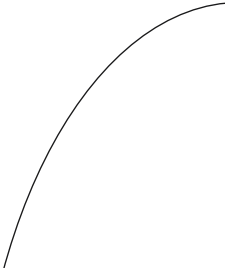
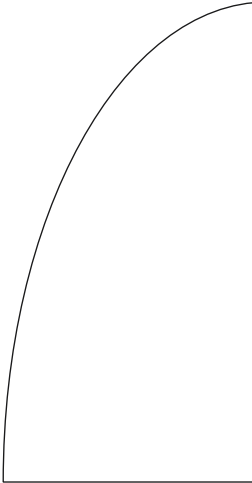
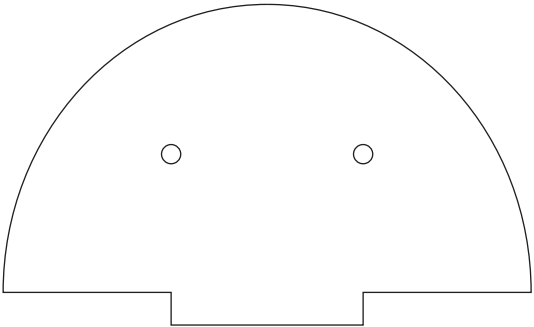
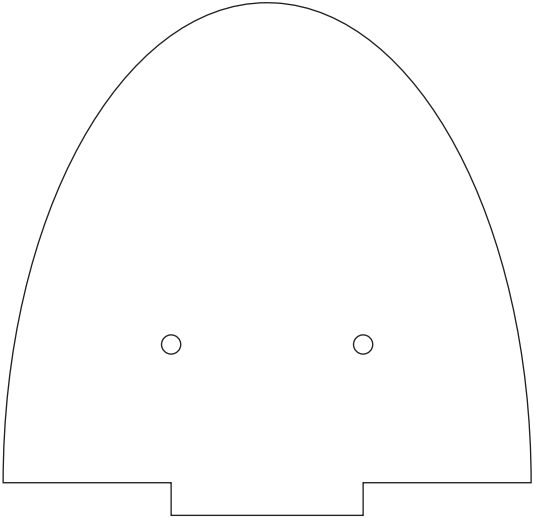
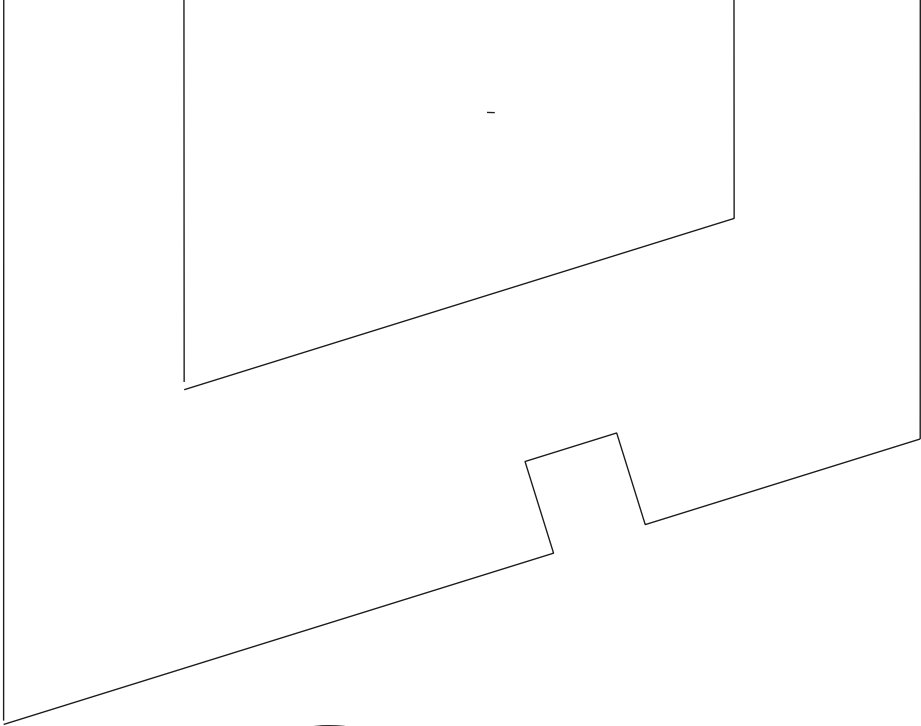
[www.flitetest.com](http://www.flitetest.com)

--	--

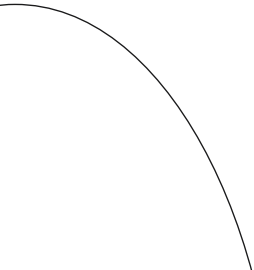
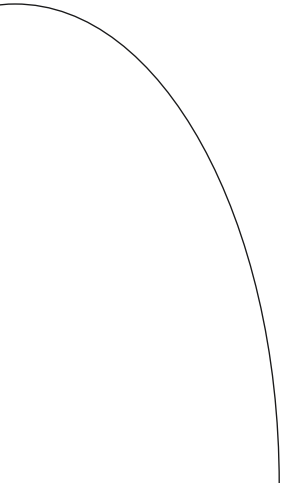








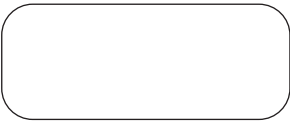
Posterboard turtledeck and wing tip covers

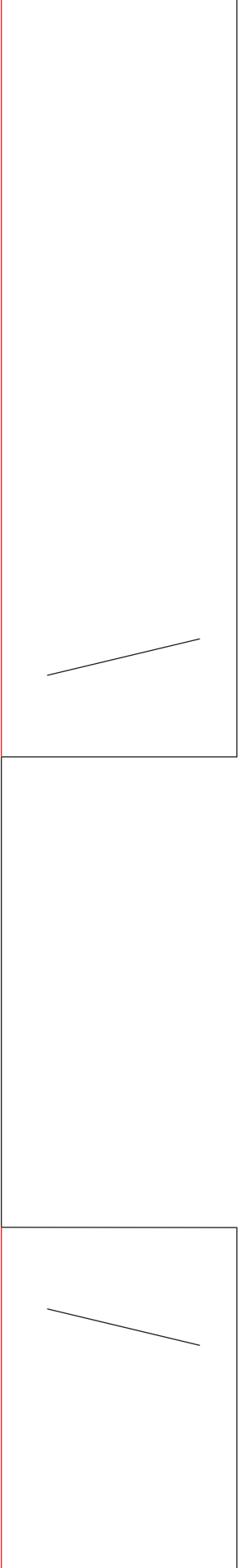


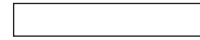


24" Inches  
(610 mm)

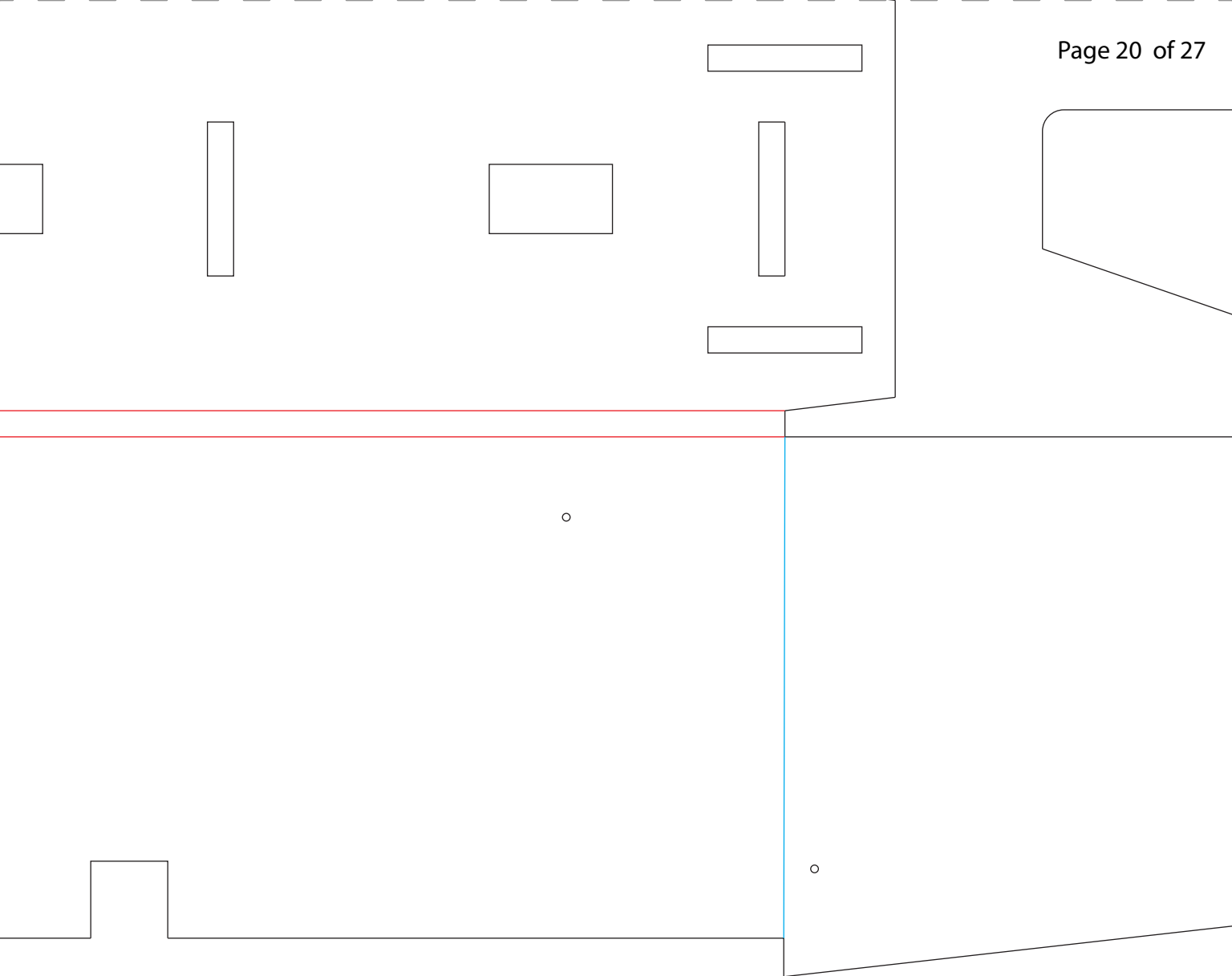








[www.flitetest.com](http://www.flitetest.com)



black = cut

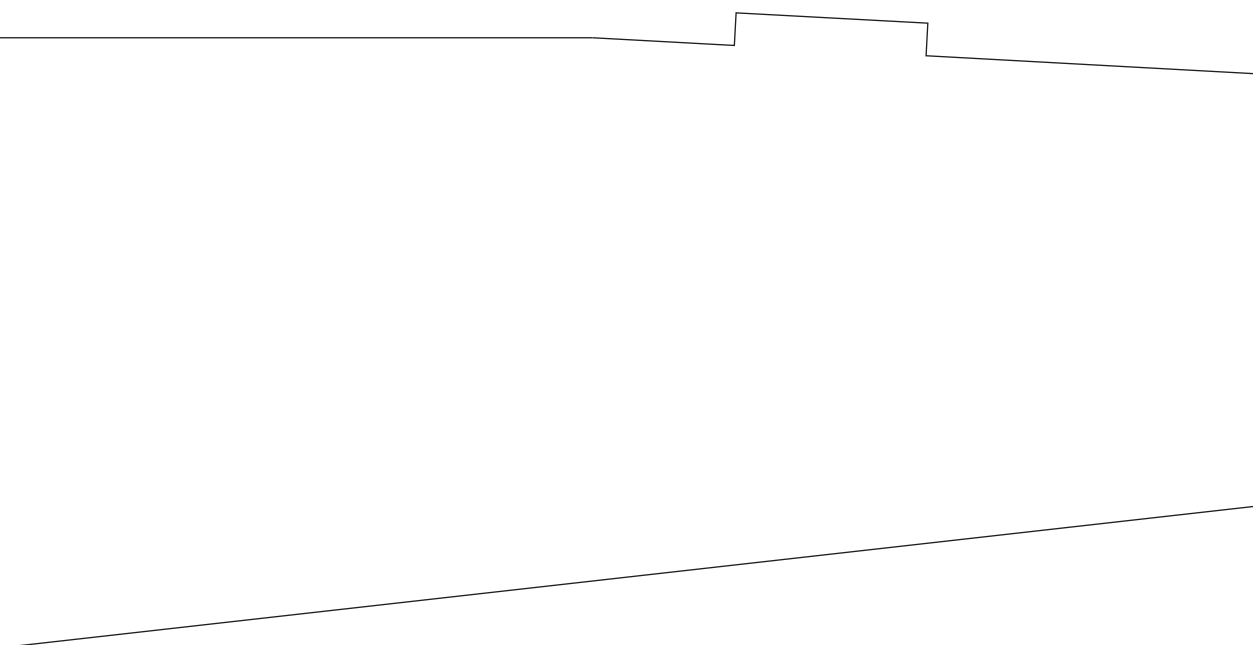
red = score 50%

blue = lightly crease

Throw gauge

High

Low



### Recommended electronics:

Park 400, 810 kv minimum

18-30 amp

1300 mAH 20C 3s to 2200 mAH 3s

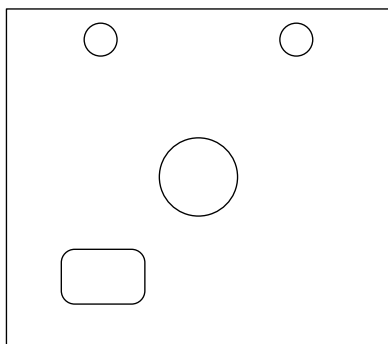
(3) 9 gram servos

### Throws:

19 degrees deflection (low)

30 degrees deflection (high)

Expo 30% on both rates



### Firewall

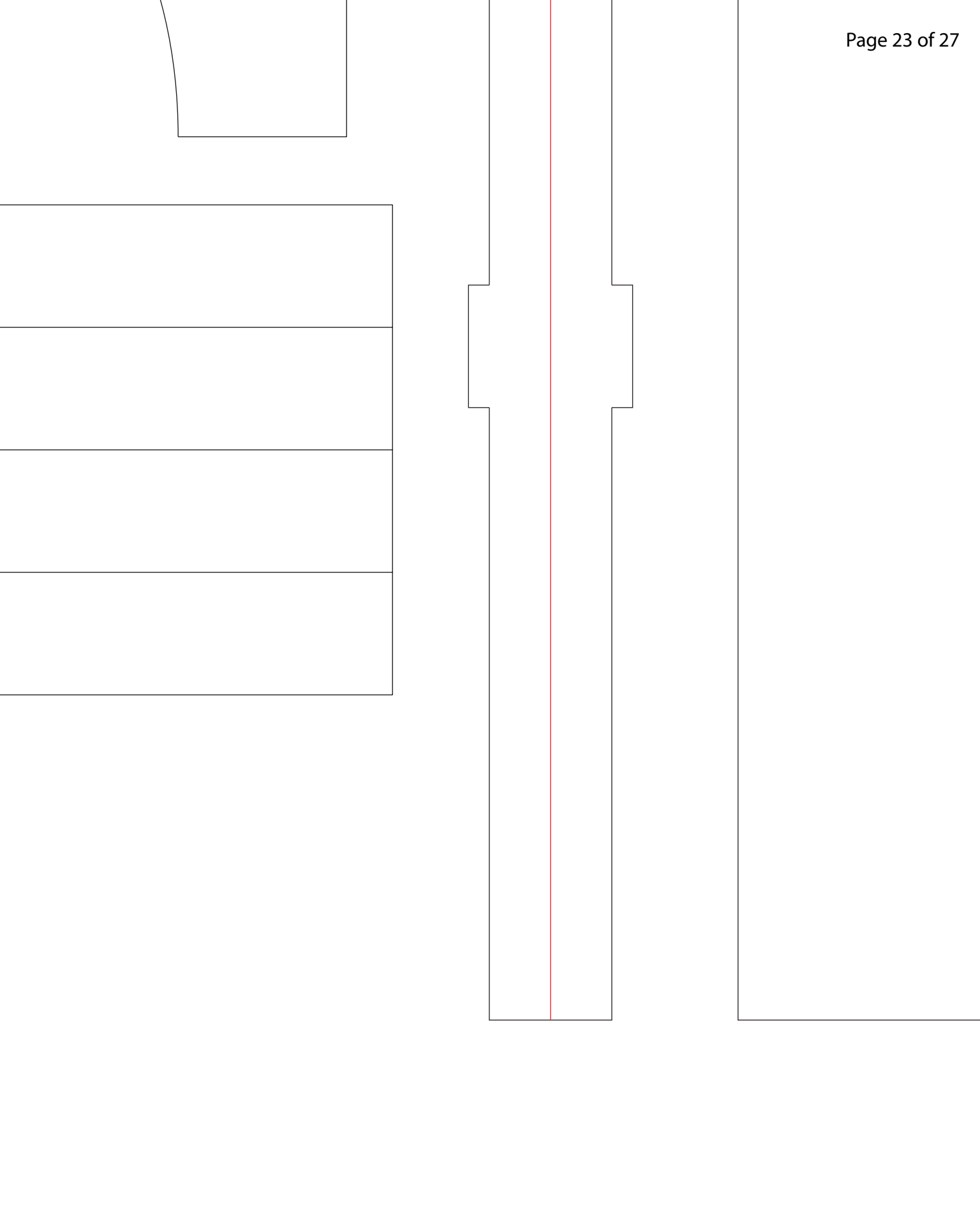
2" X 1  $\frac{3}{4}$ " Inch  
(50mm X 45mm)

$\frac{1}{16}$ " Inch thick  
(1.5mm)

Hobby Plywood

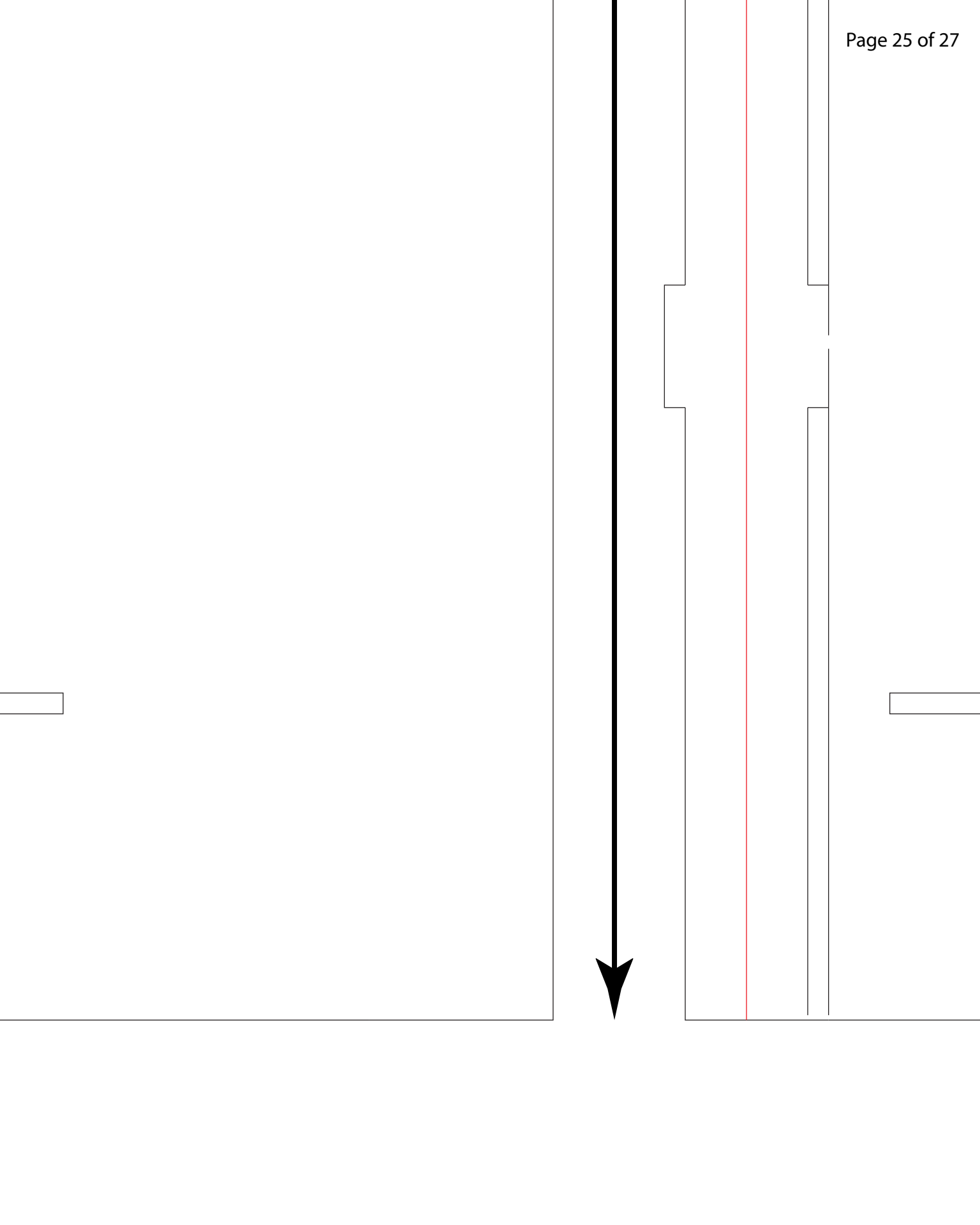
Weight Without Battery  
14 oz (396 grams)

Prop:  
9 X 4.7 Slow Fly











Design By: Josh Bixler